



2018~19

COUPON BOOK

English

Best
tourist destinations in
Gyeonggi-do, Korea



The coupons inside the book apply to foreign visitors only.

본 책자의 쿠폰은
외국인관광객만 사용가능



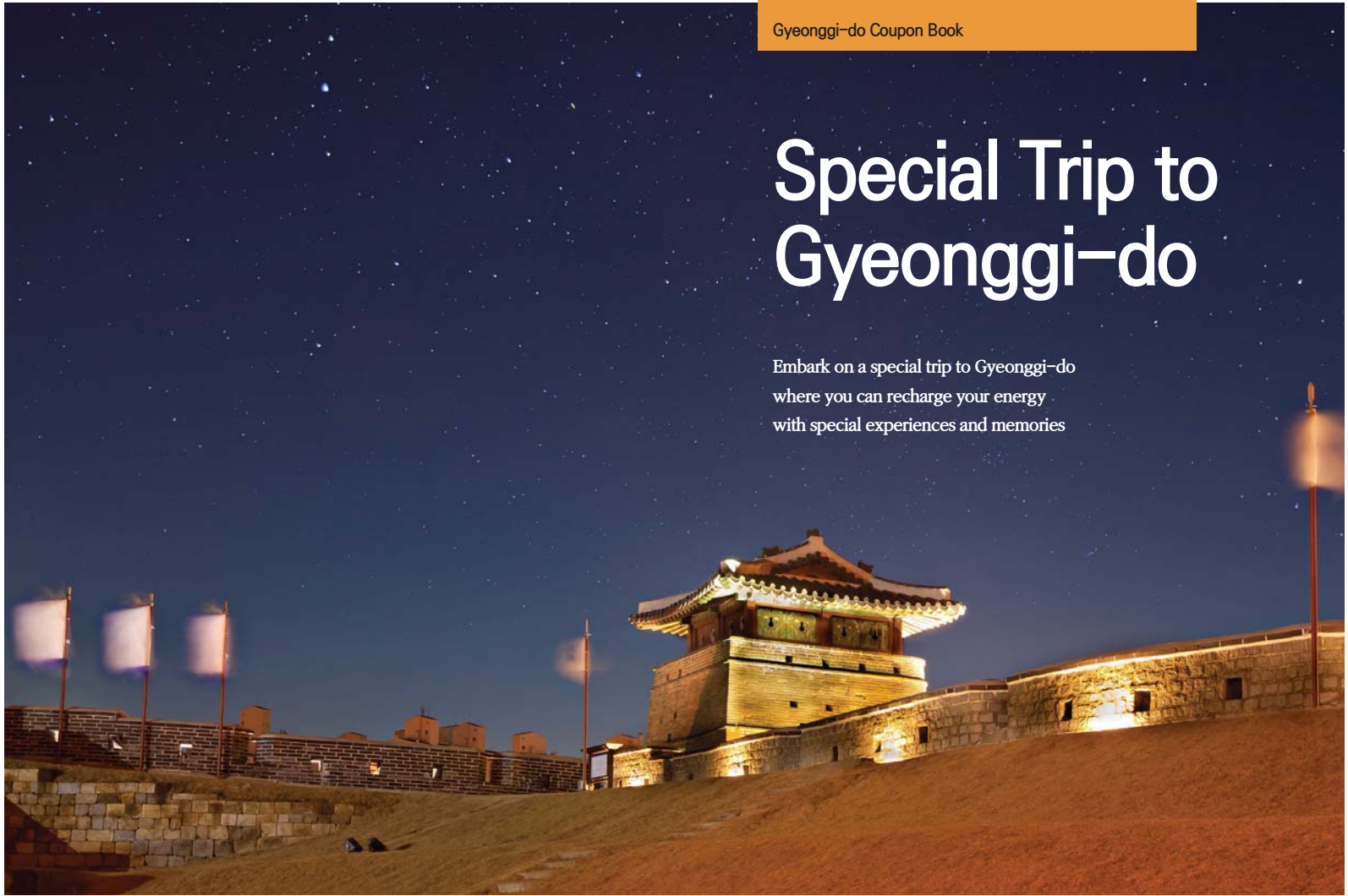
Global Inspiration
Gyeonggi-Do



**GYEONGGI TOURISM
ORGANIZATION** 경기관광공사

Special Trip to Gyeonggi-do

Embark on a special trip to Gyeonggi-do
where you can recharge your energy
with special experiences and memories



Enjoy
Themed cities of
Gyeonggi-do

Embark on a Special Trip to Gyeonggi-do, where Themed Cities boast unique attractions to enjoy every day of the year

- 1-hour drive from Seoul!
- Everland Resort, the 4th largest theme park in the world
- Premium outlets that meet entertainment and shopping needs
- Famous filming location of K-dramas, K-movies, and K-pop
- Traditional and modern attractions of Korea

Map of Korea

Map of Northern, Eastern, Southern Gyeonggi-do



1. Everland 에버랜드
2. Suwon City Tour 수원시티투어
3. Korean Folk Village 한국민속촌
4. Dae Jang Geum Park 용인대장금파크
5. Gwangmyeong Cave 광명동굴
6. Herb Island 허브아일랜드
7. Onemount 원마운트
8. Hanwha Aqua Planet Ilsan 한화아쿠아플라넷일산
9. Woongjin Playdoci 웁진플레이도시
10. Korea Manhwa Museum 한국만화박물관
11. Petite France 피티프랑스
12. The Garden of Morning Calm 아침고요수목원
13. Edelweiss Swiss Theme Park 에델바이스 스위스 테마파크
14. Seoulland 서울랜드
15. Semiwon 세미원
16. Boss Apple Farm 사과광채
17. Pocheon Art Valley 포천 아트밸리
18. Hyundai Motorstudio Goyang 현대 모터스튜디오 고양
19. Panmunjeom + The 3rd Tunnel 중랑고속 동시투어
20. Yangpyeong Rail-Bike 양평레일바이크
21. See's Coffee 씨즈커피
22. Yangpyeong The Green 양평더그림
23. Painters Hero 페인티즈히어로
24. Airport Railroad 공항철도
25. Trick Eye Museum 트릭아이
26. Starlight Garden OOOZOOO 별빛정원우주
27. Pig Museum 돼지박물관
28. The Shilla Duty Free 신라면세점
29. Paju Premium Outlets 파주 프리미엄아웃렛
30. Sanmeoru Farm 산머루농원



- ⑤ Seoul-Suwon 44km (approx. 55 min)
- ⑤ Seoul-Goyang 20km (approx. 37 min)
- ⑤ Seoul-Yongin 40km (approx. 64 min)
- ⑤ Seoul-Gapyeong 55km (approx. 72 min)
- ⑤ Seoul-Paju 28km (approx. 63 min)
- ⑤ Seoul-Yangpyeong 45km (approx. 72 min)
- ⑤ Incheon Int'l Airport - Suwon 70km (80 min)
- ⑤ Gimpo Int'l Airport - Suwon 50km (100 min)
- ⑤ Suwon is the provincial capital of Gyeonggi-do

GGgo

Experience amazing AR (augmented reality) by downloading the 'GGgo' app and using it to view picture on the coupon.

- STEP 01 Search for 'GGgo' app in the app store or scan the QR code.
- STEP 02 Install the GGgo app for free.
- STEP 03 Tag the coupon picture to enjoy the AR experience.



Everland Station

[Shuttle Bus / Round Trip 12,000 KRW]

[Public Transportation / Single Trip 2,500 KRW] - Gangnam Station Exit 10 Bus No. 5002 / Jamsil Station Exit 6, Bus No. 5700

✓ Photocopied Coupons or Mobile coupons Accepted

Photo ID required at the ticket office
4 persons per coupon
Valid until 03/31/2019

* Coupon may be void without code name

코드명 : 외국인-관광공사

Suwon Station Exit No. 4

Hours : 09:00~18:00(No tour on Mondays)

✗ Photocopied Coupons and Mobile coupons NOT accepted

Photo ID required at the ticket office
1 person per coupon
Valid until 04/30/2019

Korean Folk Village

Subway : Jonggak Station → Sangal Station(Bundang Line) 2,500KRW / Gangnam Station → Sangal Station(Bundang Line) 2,500KRW / Suwon Station → Sangal Station(Bundang Line) 1,350 KRW
Bus : Sinnonhyun Station/Gangnam Station : 5001-1 (2,500 KRW) / Jonggak Station : 5500-1 (2,500 KRW)
Taxi : Gangnam Station : Approx. 28,000 KRW / Jonggak Station : Approx. 35,000 KRW / Suwon Station : Approx. 13,000 KRW / Sangal Station : Approx. 3,000 KRW → Korean Folk Village

✓ Photocopied Coupons or Mobile coupons Accepted

Photo ID required at the ticket office
1 person per coupon
Valid until 04/30/2019

* Check before visiting as hours may change seasonally
* Free shuttle bus available (Suwon Station → Korean Folk Village)
* Halal certified restaurants and prayer rooms available

Suwon Station Exit No. 9

Bus : Walk 311m from Suwon Station Exit 9 to Maesan Market Stop → Board Bus No. 10 at Maesan Market and get off at Baegam Bus Terminal Stop → Walk 33m to Baegam Stop → Board Bus No. 105 at Baegam and get off at MBC Drama Set Stop (approx. 1,950 KRW)

Taxi : Suwon Station → Dae Jang Geum Park (Approx. 50,000 KRW)

✓ Photocopied Coupons or Mobile coupons Accepted

Photo ID required at the ticket office
2 persons per coupon
Valid until 04/30/2019

KTX Gwangmyeong Station

Subway : KTX Gwangmyeong Station → Board Bus No. 17 or 77B (1,500 KRW)

Bus : Gwangmyeong City Bus No. 17 Fare : 1,200 KRW /

Taxi : KTX Gwangmyeong Station → Gwangmyeong Cave Fare: 5,000 KRW

✓ Photocopied Coupons or Mobile coupons Accepted

Photo ID required at the ticket office
4 persons per coupon
Valid until 04/30/2019

* Closed every Monday
* Navigation search : Gwangmyeong Cave / Gwangmyeong City Resource Recovery Facility

Seoul Station

2,450 KRW (Subway+Bus) - Subway : Seoul Station → Soyosan Station → Bus : Board Bus No. 57 across from Soyosan Station, get off at Herb Island

Taxi : 65,000 KRW from Seoul Station to Herb Island

✓ Photocopied Coupons or Mobile coupons Accepted

Photo ID required at the ticket office
Exclusive Offer for foreign tourists
Valid until 04/30/2019



50% off

ONEMOUNT 원마운트

50% Off Admission

50% Off Meal Coupons: Pay ₩3,000 and Spend ₩7,000
50% discount for Siberian Husky Sled Experience ₩8,000 → ₩4,000
※ Discount applicable for package ticket purchase before entry.
Only for foreign (non-Korean) visitors

📍 300, Hallyu world-ro, Ilsanseo-gu, Goyang-si, Gyeonggi-do
☎ 82-1566-2232 🌐 www.onemount.co.kr



30% off

Hanwha Aqua Planet Ilsan 한화 아쿠아플라넷 일산

30% Off Admission

Normal price ₩29,000 → ₩20,300
30% off discount regardless of age

this coupon is only valid for foreigners.

📍 282, Hallyu world-ro, Ilsanseo-gu, Goyang-si, Gyeonggi-do
☎ 82-31-960-8500 🌐 http://www.aquaplanet.co.kr/ilsan/index.jsp



40% off

Woongjin Play Doci 웁진플레이도시

40% Off Admission

Admission Price Differs Seasonally discount rate 40%

📍 2, Jomaru-ro, Bucheon-si, Gyeonggi-do
☎ 82-1577-5773 🌐 www.playdoci.com



20% off

Korea Manhwa Museum 한국만화박물관

20% Off Admission

Admission ₩5,000 → ₩4,000
Paid contents not included (hands-on experience, theater)

📍 1, Gilju-ro, Bucheon-si, Gyeonggi-do
☎ 82-32-310-3090~1 🌐 www.komacon.kr/comicsmuseum



20% off

Petite France쁘띠프랑스

20% Off Admission

Adult ₩10,000 → ₩8,000
Youth ₩8,000
Child ₩7,000

📍 616-2, Goseong-ri, Cheongyeong-myeon, Gapyeong-gun, Gyeonggi-do
☎ 82-31-584-8200 🌐 www.pfcamp.com



15% off

The Garden of Morning Calm 아침요수목원

15% Off Admission

₩9,500 → ₩8,000
Only applicable to adult fees

📍 432, Sumogwon-ro, Sang-myeon, Gapyeong-gun, Gyeonggi-do
☎ 82-1544-6703 🌐 http://morningcalm.co.kr

Downtown Seoul ▶ Juyeop Station

Get off at Juyeop Station (Line 3, Orange Line) → From Exit 2, walk 10 minutes along the park walkway or take a taxi from Exit 2 (base fare) Taxi : from downtown Seoul (approx. 3-40,000 KRW)

✔ Photocopied Coupons or Mobile coupons Accepted

Photo ID required at the ticket office
Unlimited use for foreign visitors
Valid until 04/30/2019

* Purchase tickets at Information Desk
located on second floor of Park Entrance

Juyeop Station, Exit 2 or 3

Walking : 15 minutes toward Juyeop Park/ Taxi : Board from Exit 4 (approx. 3,200 KRW)

Bus : Juyeop Station Bus Stop (Central) → Board Bus No.080 → Munchon Village → Hyundai Department Store → Hanwha Aqua Planet Ilsan

✘ Photocopied Coupons and Mobile coupons NOT Accepted

Photo ID required at the ticket office
4 persons per coupon
Valid until 04/30/2019

Line No.7 Samsan Gymnasium Station

Walking : 7 minutes (approx. 1,550 KRW)

Bus : No. 1200 Hongik University Station
→ Samsan Gymnasium Station, about 40 minutes

Taxi : 30 minutes from downtown Seoul (approx. 20,000 KRW)

✔ Photocopied Coupons or Mobile coupons Accepted

Photo ID required at the ticket office
4 persons per coupon
Valid until 04/30/2019

Line No.1 Bugae Station

From Line No.1 Bugae Strn., transfer to Town Bus No. 579 for 15 minutes (approx. 1,550 KRW)

Line No.7 Samsan Gymnasium Station Exit 5

Walking : 3 minutes / Taxi : Base fare from Bucheon Central Bus Terminal

Bus : No. 79(Bugae Station → Korea Manwha Museum) / No.37(Songnae Station → Sangdong Station → Samsan Gymnasium Station) / No.87(Songnae Station → Sangdong Station → Samsan Gymnasium Station) / No.53 (Songnae Station → Sangdong Station → Korea Manwha Museum) / No.59-1(Hwagok Station → Korea Manwha Museum)

✔ Photocopied coupon **NOT** accepted

Mobile coupon Accepted
Photo ID required at the ticket office
4 persons per coupon
Valid until 04/30/2019

* Closed: Mondays, Jan. 1, one day before
and the day of Lunar New Year Day and
Chuseok

From Cheongpyeong Station /Gapyeong Station (Gyeongchun Line)

Board "Gapyeong Tour Circuit Bus" → Get off at Cheongpyeong Station (Gyeongchun Line) → Walk to Cheongpyeong Terminal (10 minutes) and get on inter-city bus to Goseong-ri

Bus : Get on the bus to Cheongpyeong Terminal at Dongseoul Bus Terminal, Sangbong Terminal → At Cheongpyeong Terminal, Board the intra-city bus to Goseong-ri

Taxi : Turn right toward Homyeong-ri at the Cheongpyeong Dam Entrance three-way intersection past Daeseong-ri before Cheongpyeong → Go straight for 10km from Cheongpyeong Dam to arrive at Petite France

✔ Photocopied coupon **NOT** accepted
Downloaded Mobile coupons accepted , no captured or photocopied ones.
Photo ID required at the ticket office
1 person per coupon / Valid until 04/30/2019

(Gyeongchun Line)Cheongpyeong Station

Bus : Cheongnyang-ri → Cheongpyeong → The Garden of Morning Calm (Express City Bus → City and Circuit Bus)

Taxi : Cheongpyeong Station → The Garden of Morning Calm 18,000 ~ 20,000 KRW

✔ Photocopied Coupons or Mobile coupons Accepted

Photo ID required at the ticket office
1 person per coupon
Valid until 03/31/2019



30% off

Edelweiss Swiss Theme Park 에델바이스 스위스 테마파크

30% Off Admission

Adult ₩10,000 → ₩7,000
Youth ₩6,000 → ₩4,200
Child ₩5,000 → ₩3,500

📍 226-57, Darakjae-ro, Seorak-myeon, Gapyeong-gun, Gyeonggi-do
☎ 82-31-581-9400 🌐 <http://www.swissthemepark.com>



40% off

Seoulland 서울랜드

40% Off Admission

₩42,000 → ₩25,000

📍 181, Gwangmyeong-ro, Gwacheon-si, Gyeonggi-do
☎ 82-2-509-6000 🌐 <http://www.seoulland.co.kr>



20% off

Semiwon 세미원

20% Off Admission

Adult ₩5,000 → ₩4,000
Youth ₩3,000 → ₩2,000

📍 93, Yangsu-ro, Yangseo-myeon, Yangpyeong-gun, Gyeonggi-do
☎ 82-31-775-1835 🌐 www.semiwon.or.kr



20% off

Boss Apple Farm 사과장래

20% discount for Mini Apple Picking Experience (including farm tour)

₩15,000 → ₩12,000

📍 682-7 Geumju-ri, Jeongju-myeon, Pocheon-si, Gyeonggi-do
☎ 82-31-544-8998 🌐 <http://bossapple.com/>



50% off

Pocheon Art Valley 포천 아트밸리

Tour Discount Coupon 50% Off

Adult ₩5,000 → ₩2,000 / Youth ₩3,000 → ₩1,500 / Child ₩1,500 → ₩800

Monorail fares

Adult (Round Trip) ₩4,500 → ₩2,300 / (One Way) ₩3,500 → ₩1,800
Youth (Round Trip) ₩3,500 → ₩1,800 / (One Way) ₩2,500 → ₩1,300
Child (Round Trip) ₩2,500 → ₩1,300 / (One Way) ₩1,800 → ₩1,000

📍 234, Art valley-ro, Sinbuk-myeon, Pocheon-si, Gyeonggi-do
☎ 82-31-538-3485 🌐 artvalley.pocheon.go.kr



30% off

HYUNDAI MOTORSTUDIO GOYANG 현대 모터스튜디오 고양

30% Off Admission, 10% Off Café & Kitchen (excludes alcohol)

Adult ₩10,000 → ₩7,000
Youth ₩7,000 → ₩4,900
Child, Senior ₩5,000 → ₩3,500

Offer for foreign visitors only

📍 217-6, Kintex-ro, Ilsanseo-gu, Goyang-si, Gyeonggi-do
☎ 82-1899-6611 🌐 <http://motorstudio.hyundai.com/goyang>

Cheongpyeong Station

Train + Taxi : Cheongpyeong Station → Take taxi → Edelweiss

Bus + Taxi : Board Inter-city Bus No. 7000 at Jamsil Station → Seorak Terminal → Take taxi → Edelweiss

✓ Photocopied Coupons or Mobile coupons Accepted

Photo ID required at the ticket office
4 persons per coupon
Valid until 04/30/2019

Seoul Grand Park Station(Line No. 4)

Line No. 4 Exit1, 2, or 3

✓ Photocopied Coupons or Mobile coupons Accepted

Photo ID required at the ticket office
4 persons per coupon
Valid until 04/30/2019

Subway : Take A' REX, transfer to the Gyeongui-Jungang Line at Gongdeok Station, and get off at Yangsu Station / 4,650 KRW(2 hr 35 mins)
Incheon Airport Bus Limousine : Board Bus No. 6006, 6705, or 6006-1 → get off at Jamsil Station → Board Bus No. 2002-1 → get off at Yangseo-myeon Office, Sports Park (17,750 KRW)
Taxi : Depart from Incheon International Airport (approx. 80,000 KRW/1 hr 25 mins/98.6km)

✗ Photocopied Coupons and Mobile coupons NOT Accepted

Photo ID required at the ticket office
2 persons per coupon
Valid until 04/30/2019

Incheon Airport Terminal 1 Station

A' REX → Seoul Station (Line No. 4) → Changdong Station (Line No. 1) → Board Bus No. 138-6 at Hanwha Life Entrance Stop → Get off at Baengnoju Park Entrance Stop (approx. 3,750 KRW)

✓ Photocopied Coupons or Mobile coupons Accepted

Photo ID required at the ticket office
4 persons per coupon
Valid until 04/30/2019

Seoul

Bus : Seoul-Pocheon City Hall, transfer to Bus No. 73
Taxi : Base fare from Sinbuk-myeon Office

✓ Photocopied Coupons NOT Accepted
Mobile coupons Accepted

Photo ID required at the ticket office
4 persons per coupon
Valid until 04/30/2019

Daehwa Station Exit No.1

Bus : No. 058 (Green Bus) → Get off at Hyundai Motorstudio Goyang (15 mins/1,050 KRW)

Taxi : approx. 3,000 KRW

✓ Photocopied Coupons or Mobile coupons Accepted

Photo ID required at Information
4 persons per coupon
Valid until 04/30/2019

Seoul Station Line No. 1

Board Bus No. 138-6 at Hanwha Life Entrance Stop → Get off at Baengnoju Park Entrance Stop (approx. 2,650 KRW).

* Available on weekends and national holidays, as well as summer and winter breaks.

* Discount not applicable to groups



15% off

Panmunjeom+The 3rd Tunnel 종각고속 동서투어

Tour Discount Coupon 15% Off

Adult ₩130,000 / Child ₩130,000 (over 11) → ₩110,000
※ Tour: Tue - Fri (weekdays only)
※ Reservation required 4 days in advance
※ You must bring the coupon on the day of the tour.

☎ 82-2-2266-3350 🌐 www.jsatour.com
E-mail : info@joongangtour.com Social Media : www.facebook.com/jsaJoongangtour



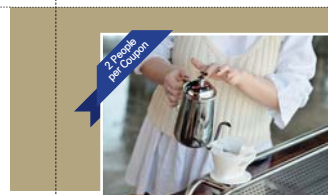
10% off

Yangpyeong Rail-Bike 양평레일바이크

10% Off Admission

4-seater ₩38,000 → ₩34,200
2-seater ₩30,000 → ₩27,000

☎ 277, Yongmun-ro, Yongmun-myeon, Yangpyeong-gun, Gyeonggi-do
☎ 82-31-775-9911 🌐 www.yprailbike.com



33% off

Daeryong Coffee Culture Experience Hall (See's Coffee) 대룡커피문화체험관(씨즈커피)

33% Off Admission

₩15,000 → ₩10,000

☎ 30, Padam-ro 149 beon-gil, Mohyeon-myeon, Cheoin-gu, Yongin-si, Gyeonggi-do
☎ 82-1522-8866 🌐 http://www.seescoffee.com



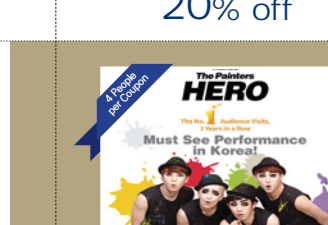
20% off

Yangpyeong The Green 양평 더그림

Admission (Including beverage) 20% Off

Adult ₩7,000 → ₩5,600
Child ₩5,000 → ₩4,000
Purchased ticket may be exchanged for a free beverage.
(Select one among 23 beverage choices)

☎ 175, Sanasa-gil, Okcheon-myeon, Yangpyeong-gun, Gyeonggi-do
☎ 82-70-4257-2210 🌐 www.thegreem.com



20% off

Painters HERO 페인터즈 히어로

20% Off All Seats

VIP ₩60,000 → ₩48,000
S ₩50,000 → ₩40,000
A ₩40,000 → ₩32,000

☎ 13, Donhwamun-ro, Jongno-gu, Seoul Theater F5 Jongno Dedicated Theater
☎ 82-2-766-7848 🌐 http://thepainters.co.kr/



17% off

Airport Railroad 공항철도

17% off for express train ticket

Adult ₩9,000 → ₩7,500
A refundable card deposit amount of 500KRW may occur

Coupon No. 93001

☎ 82-1599-7788 🌐 www.arex.or.kr

DMZ Tour Departing from Seoul

DMZ Tour Departing from Seoul (Subway) 5 minute Walk from Exit 8 of Euljiro 1 Ga Station (line 2)

Tour office is located inside of President Hotel 7th floor* JOONG ANG* office.

Tour itinerary is subject to change (be cancelled or shortened) due to the military drills and other reasons in the DMZ.

✓ Photocopied coupon Accepted

Use ticket office / Advance reservation required
Passport required / 1 person per coupon
Valid until 04/30/2019

Yongmun Station Walking: 10 minutes from Yongmun Station

Subway : Cheongnyangni Station → Yongmun Station (Gyeongui-Jungang Line) 2,200 KRW

Bus : Dongseoul → Yongmun Terminal 6,500 KRW

Taxi : Yongmoon Station → Yangpyeong Rail Bike 3,000 KRW (4,000 KRW when summoned)

✗ Photocopied Coupons NOT Accepted
Mobile coupon NOT Accepted

Photo ID required at the ticket office
4 persons per coupon
Valid until 04/30/2019

Everland Station

Taxi : 7minutes from Everland Station (6,000 KRW)

✓ Photocopied Coupons **NOT** Accepted
Mobile coupon Accepted

Photo ID required at the ticket office
2 persons per coupon
Valid until 04/30/2019

* Roasting and hand-dripping coffee /
Photo zone

Yangpyeong Station Exit 1

Taxi : 10 minutes from Yangpyeong Station(approx. 7,000 KRW)

✓ Photocopied Coupons **NOT** Accepted
Mobile coupon Accepted

Photo ID required at the ticket office
4 persons per coupon
Valid until 04/30/2019

Subway

1) Jongno Theater : Line No. 1, 3, 5,
Jongro 3-ga Station Exit 14

2) Seodaemun Theater : Get off at Line
No. 2, 5 Chungjeongno Station

✓ Photocopied Coupons or Mobile coupons Accepted

Photo ID required at the ticket office
4 persons per coupon
Valid until 04/30/2019

Bus

1) Jongno Theater
Bus 111 / Green Bus 7212 / Blue Bus 101, 103, 140, 201 /
Express City Bus 9301 / Get off at 'Jongno 3-ga Station Exit 15'

2) Seodaemun Theater
Bus 1002 / Blue Bus 160, 171, 260, 270, 271, 273, 600, 602, 721,
751, N26 / Express City Bus 1004 / Express Bus 8600, 8601, 8601A /
Airport Limousine 6002 / Get off at 'Chungjeongno Station'

Airport Railroad

✓ Photocopied Coupons **NOT** Accepted / Mobile coupons Accepted
Photo ID required at the ticket office / 1 person per coupon / Valid until 12/31/2018

Transfer Express Train All stop Train



Coupon No. 93001

* For a group purchase of more than
3 people, the same rate of discount
applies as the coupon



25% off

Trick Eye Museum 트릭아이뮤지엄

25% Off Admission

Yangpyeong(Retro Museum) ₩6,000 → ₩4,500
Hongik University ₩15,000 → ₩12,000
Jeju ₩12,000 → ₩10,000
Busan ₩8,000 → ₩6,000

Only applicable to adult fare

620, Yongsamsan-ro, Yongsun-myeon, Yangpyeong-gun, Gyeonggi-do
82-31-775-8907, 82-2-3144-3600 www.retro museum.co.kr, www.trickeye.co.kr



30% off

Starlight Garden OOOZOOO 별빛정원 우주

30% discount for package

30% discount for Space admission + Tower boarding PKG
(only applies to adults & night time)

Space admission + Tower boarding PKG ₩24,000 → ₩17,000

287-76, Deogi-ro 154beon-gil, Majang-myeon, Icheon-si, Gyeonggi-do
82-31-645-0002 www.ooozoo.co.kr



10% off

Pig Museum 돼지박물관

10% Off Admission

Adult ₩7,000 → ₩6,300
Child ₩6,000 → ₩5,400
Free Admission for Under 24 months old

129-7, Imosan-ro 372beon-gil, Yul-myeon, Icheon-si, Gyeonggi-do
82-31-641-7540 pigpark.co.kr



10% off

The Shilla Duty Free (Seoul, Incheon International Airport branch) 신라면세점(서울점, 인천점)

Up to 10% Discount

Holders of the Korea Tourism coupon are granted a gift card worth KRW 10,000 /
Hanbok experience ticket or a travel amenity package for any purchase over \$1

249, Dongho-ro, Jung-gu, Seoul
82-2-2639-6000 http://www.shilladfs.com



VIP Coupon book

Shinsegae Simon Paju Premium Outlets

신세계사이먼 파주 프리미엄 아울렛

VIP Coupon Book

A special coupon that can be used for discounts at over 80 stores in Paju
Premium Outlets as part of VIP Passport Membership benefits available
for customers who make purchases over 400,000 KRW in a day

200, Pilsong-ro, Tanhyeon-myeon, Paju-si, Gyeonggi-do
82-1644-4001 https://www.premiumoutlets.co.kr/paju



20% off

Sanmeoru Farm 산머루농원

Tour Discount Coupon 20% Off

My Wine ₩15,000 → ₩12,000
Jam Making ₩8,000 → ₩6,400

441-25, Witbaeuni-gil, Jeokseong-myeon, Paju-si, Gyeonggi-do
82-31-958-4558 www.sanmeoru.com

Yongmun Station

Subway : Get off at Yongmun Station (Gyeongui-Jungang Line)
(Approx. 2,500 KRW)

Taxi : Yongmun Station → Youth Museum (Approx. 12,000 KRW)

☑ Photocopied Coupons or Mobile Accepted

Photo ID required at the ticket office
4 persons per coupon
Valid until 04/30/2019

Yongmun Inter-city Bus Terminal

Approx. 6,500 KRW

Icheon Station

Taxi : approx. 12,000 KRW

☑ Photocopied Coupons or Mobile Accepted

Photo ID required at the ticket office
4 persons per coupon
Valid until 04/30/2019

Icheon Terminal

Bus : At the terminal, board Bus No. 22-9, 12-3, or 12-1
get off at Icheon Lotte Premium Outlet Stop, and
walk 10 minutes

Taxi : From Icheon Terminal to OOOZOOO (15,000 KRW)

1. From Dong Seoul Bus Terminal, take an intercity bus to Janghowon (from 6:30AM, runs regularly every 20 to 30 minutes). Takes about 1 hour. Get off the bus at Janghowon Terminal and take a taxi (approx. 10~15minutes)
2. From Dong Seoul Bus Terminal, take an intercity bus to Ijuk (from 6:30AM, runs regularly every 20 to 30 minutes). Takes about 1 hour and 10 minutes. Get off the bus at Ijuk Terminal and take a taxi.
3. From Incheon International Airport/Gimpo Airport, take an airport limousine bus to Icheon (runs every hour from 7:00AM) and get off at Dong Seoul Bus Terminal. From there, refer to 1 or 2 above. Or get off at Icheon Terminal then take an express bus (runs every 30 minutes) to Janghowon (takes about 30~40 minutes) and take a taxi.

☑ Photocopied Coupons **NOT** Accepted
Mobile coupon Accepted
Photo ID required at the ticket office / 2 persons per coupon
Valid until 04/30/2019

* Available on weekends and national
holidays, as well as summer and winter
breaks.

Subway Line No.3 Dongguk University Station Exit 5

Blue Bus No.144, 301, 407

☑ Photocopied Coupons **NOT** Accepted
Mobile coupon Accepted

1 person per coupon
Valid until 04/30/2019

* Taxi Fare Support (Present the receipt from your taxi ride
and get a gift card up to KRW 20,000)

Hapjeong Station Exit 1

Bus No. 2200 (Approx. 1 hour)

☒ Photocopied Coupons and Mobile coupon **NOT** Accepted

Photo ID required at the ticket office
1 person per coupon
Valid until 04/30/2019

Daehwa Station Exit 1

Bus No. 900 (Approx. 1 hour and a half)

* Instant reimbursement service for
additional tax; WeChat Pay / UnionPay
available; Chinese interpretation
service available (1644-4001)

Munsan Station

Subway : Seoul Station → Munsan Station → Take taxi (20,000 KRW) or Bus (2,000 KRW)

Taxi : 50,000-60,000 KRW from Seoul

☑ Photocopied Coupons or Mobile Accepted

Photo ID required at the ticket office
4 persons per coupon
Valid until 04/30/2019

* Easy Shuttle available

Southern Area

SB Gangnam	B Jeongja	B Suwon	65min / ₩2,950
4 Myeong-dong	1 Geumjeong	1 Suwon	70min / ₩1,950
2 Hongik Univ.	1 Sindorim	1 Suwon	70min / ₩1,850

Suwon

Suwon City Tour | 수원시티투어

- ① Suwon Station Exit No. 4
- ② 09:00-18:00(No tour on Mondays)
- ③ 82-31-256-8300
- ④ www.suwoncitytour.co.kr

Through Suwon City Tour, you
will make memories that you
cannot forget in the traditional
cultural heritage that shines its
light in the world. The tour is
accompanied by a tour guide
who will relay exciting stories of
the Suwon Hwaseong Fortress,
registered as the World Heritage
by UNESCO in December, 1997.



Gwangmyeong

Gwangmyeong cave | 광명동굴



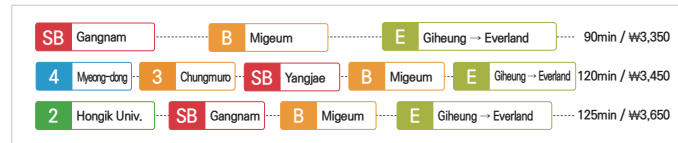
- ① KTX Gwangmyeong Station
(8-1) No.17 or 77B 1,500 KRW
- ② Gwangmyeong City Bus No. 17
Fare: 1,200 KRW
- ③ KTX Gwangmyeong Station →
Gwangmyeong Cave
Fare: 5,000 KRW
- ④ 09:00-18:00(Closed every Monday)
- ⑤ 82-70-4277-8902
82-2-2680-6550
- ⑥ www.cavern.gm.go.kr



With a rich legacy of its century-old history, Gwangmyeong cave is a theme
park that brings together culture, art, and tourism. A gold and silver mine in
operation since 1912, the cave was abandoned for 40 years before it was
revived.

Today, Gwangmyeong cave is selected as one of "Korea's 100 Top Tourist
Attractions" and "Stars of Korean Tourism." Inside, you can find more than 20
attractions such as Light Tunnel, a performance stage, Golden Path, Golden
Falls, a wine cellar and Restaurant Maru de Cave.

The temperature inside the cave is 12~13°C throughout the year. It is cool in
summer and warm in winter. Each season gives a unique feel to the cave.
Gwangmyeong cave is one of the most popular caves in Korea, visited by 1.5
million people every year.



Yongin

Everland | 에버랜드



Everland is the largest theme park in Korea and is one of the must-visit places for travelers.

Along with the main attractions (T-Express, and Amazon Express), it also includes a zoo (Safari, Lost Valley, Panda World) and a water park known as Caribbean Bay. It also hosts a range of signature festivals in different seasons.

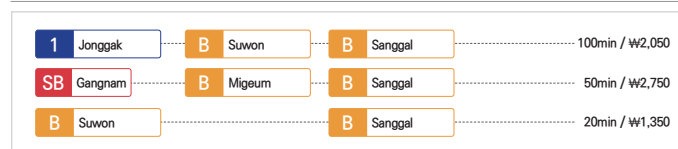
Shuttle Bus / Round Trip 12,000 KRW
Public Transportation / Single Trip 2,500 KRW

~ Gangnam Station Exit 10 Bus
No. 5002 / Jamsil Station Exit 6,
Bus No.5700

Hours differ by season (09:00 ~ 21:00)

82-31-320-5000

www.everland.com/en



Yongin

Korean Folk Village | 한국민속촌



Travel back in time to 150 years ago to the Korean Folk Village, where you can enjoy the beautiful four seasons! Always prepared with traditional performances and food for you to experience the 'style' and 'taste' of Korea, the Korean Folk Village is the filming site for various TV series such as <Sayindang>, <My Love From the Star>, and <Running Man> from SBS. You will be able to feel the footsteps of your favorite celebrities while experiencing the most Korean atmosphere.

Jonggak Station → Sangal Station
(Bundang Line) : 2,500KRW
Gangnam Station → Sangal Station
(Bundang Line) : 2,500KRW
Suwon Station → Sangal Station
(Bundang Line) : 1,350 KRW

Sinnonhyun Station/Gangnam
Station: Bus No.5001-1 (KRW 2,500)
Jonggak Station: Bus No.5500-1
(KRW 2,500)

Free shuttle bus available
(Suwon Station → Korean Folk Village)

Gangnam Station: Approx. 28,000 KRW
Jonggak Station: Approx. 35,000 KRW
Suwon Station: Approx. 13,000 KRW
Sangal Station: Approx. 3000KRW
▶ Korean Folk Village

09:30-18:00

82-31-288-0000

www.koreanfolk.co.kr

* Opening hours differ by
season (Check before using facility)

* Halal certified restaurants and
prayer rooms available

Yongin

Dae Jang Geum Park | 용인대장금파크

Maesan Market Station 311m from
Exit 9 of Suwon Station → Get on
Normal Bus 10 (Maesan Market) and
get off at Baekam Terminal Station
→ Walk 33m to Baekam Station → Get
on Normal Bus 105 (Baekam) and get
off at MBC Drama Set Stage (Approx.
1,950 KRW)

Departure from Baekam

6:30 / 7:25 / 8:25 / 10:00 / 13:00
14:55 / 16:20 / 18:40 / 21:30

Departure from Yongin
Dae Jang Geum Park

7:00 / 7:55 / 9:30 / 11:00 / 14:00
15:55 / 17:10 / 19:15 / 22:10

Suwon Station → Dae Jang Geum
Park (Approx. 50,000 KRW)

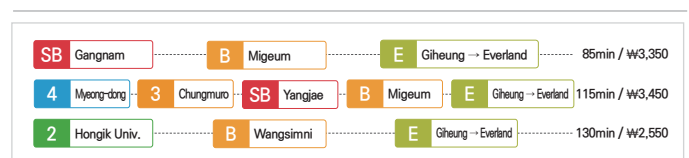
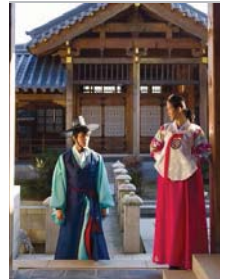
Summer Season (March ~ October)
09:00 ~ 08:00

Winter Season (November ~ February)
09:00 ~ 17:00

82-31-337-3241

http://djpgark.imbc.com

Dae Jang Geum Park is the main set of MBC Korean historical dramas, which are at the center of the Korean Wave. The largest open set studio in Korea, which spans over 68 acres, the Park also accommodates modern TV series, films, and even commercial advertisements. Unlike most production stages which are only built temporarily, it reproduces the architectural style and living space of historic eras such as the Three Kingdoms, Goryeo, and Joseon period in a nearly permanent form based on a thorough study of historical evidences. Numerous historical TV series from MBC, including <Sin Don>, <Jumong>, <Isan>, <Queen Seondeok of Silla>, <Dongi>, <The City of Violence>, <Gyeongju>, <Moon Embracing the Sun>, <God of War>, <Dr.Jin>, <Arang and the Magistrate>, <The King's Doctor>, <Hur Jun, The Original Story>, <Gu Family Book>, <Goddess of Fire>, <The King's Daughter, Soo Baek-hyang>, <Empress Gi>, <The Night Watchman's Journal>, and <Shine or Go Crazy>, were filmed in this park. Dae Jang Geum Park will not only be the setting for Korean historical dramas, but also continue to provide a fun place of revisiting the past culture, as well as a top-notch Hallyu-themed park.



Yongin

Daeryong Coffee Culture Experience Hall (See's Coffee) | 씨즈커피



Everland Station

Takes about 7 minutes from
Everland Station, 6,000 KRW

09:00-18:00

82-1522-8866

http://www.seescoffee.com

This experience hall allows you to experience a new style of coffee, and offers various brewing experiences such as factory visit, roasting, and hand-dripping. You can enjoy a cup of coffee that you brew yourself.

G·J Seoul Station G·J Munsan 65min / ₩2,050

Paju

Sanmeoru Farm | 산머루농원



- 📍 Seoul - Munsan Station
- 🚌 Easy Shuttle available
- 📍 Seoul - Munsan Station
(Subway)-Taxi (20,000 KRW) or
bus (2,000 KRW)
- 🕒 09:00-17:00
- ☎ 82-31-958-4558
- 🌐 www.sanmeoru.com

Sanmeoru Farm is the only winery located in the Seoul metropolitan area, and it produces wine using sanmeoru, Korean wild grapes.

Here you can participate in various programs including 'My wine' where you can pour wine in the bottle yourself, a sanmeoru jam making class, and wine tunnel exploration.

Paju

Panmunjeom+The 3rd Tunnel | 중앙고속 동시투어



Panmunjom (Joint Security Area) & Third Infiltration Tunnel in DMZ

This is only place you can see the division of country in the world. The Armistice Agreement was signed in Panmunjeom (JSA) where South and North Korean Forces stand face-to-face.

🚌 DMZ Tour Departs from Seoul (Advance reservation is required.)

🕒 Tours are provided on Tuesday - Friday

(Excluded national holidays, no tour days designated by the UN command and weekends)

08:10 - 16:30 (until 31st of December of 2018) tour time will be changed from 2019.

☎ 82-2-2266-3350 🌐 www.jsatour.com

Paju

Pyeonghwa Nuri | 평화누리



A quiet, peaceful place with 99,174m² of green field and site of the 2005 World Peace Festival. This eco-friendly park features a huge green field (with a capacity for 20,000 visitors) and an outdoor water performance stage. With many facilities such as the 'Hill of Music' (outdoor stage), 'Farewell' (water café), 'Hill of Wind,' 'Dolmuji' and a Pavilion, Pyeonghwa Nuri has attracted many photographers, both amateur and professional. With a variety of culture and art events such as performances, exhibitions and screenings held throughout the year, this park has transformed Imjingak into a land of harmony, peace and unification.

- 📍 Use DMZ tour Bus service
- ☎ 82-31-953-4744 (Paju/DMZ
Tourist Information Center)
- 🌐 http://www.cosmojin.com
http://www.jsatour.com
http://www.seoulcitytour.net
peace.ggtour.or.kr

Paju

Imjingak | 임진각



- 📍 Use DMZ tour Bus service
- 🕒 09:00-18:00
- ☎ 82-31-953-4744 (Paju/DMZ
Tourist Information Center)
- 🌐 http://www.cosmojin.com
http://www.jsatour.com
http://www.seoulcitytour.net
imjingak.co.kr

Imjingak is a park that was built to give consolation to homesick refugees who fled North Korea during the Korean War. About 2.5 million tourists visit Imjingak annually. Located about 7km to the south from the Military Demarcation Line (MDL) and 500m from Imjingang Station, it was constructed in 1972. At the Gyeonggi Peace Center in Imjingak, tourists can watch a video on the current status of North Korea and view the household items and pictures of the North that are on display. Mangbaedan is the spot where those whose homes were once to the north of the truce line can salute their parents and grandparents left behind in North Korea on important holidays or whenever they miss their families. A variety of DMZ and Gyeonggido-related items are available at the Imjingak souvenir shop and the restaurant and observatory are both recommended.



Paju | 신세계사이먼 파주 프리미엄 아울렛

Shinsegae Simon Paju Premium Outlets

- ➡ **Hapjeong Station(Exit 1)**
Bus No. 2200(Approx. 1hour)
- ➡ **Daehwa Station(Exit 1)**
Bus No. 900(Approx. 1hour30mins)
- ➡ **Stores and food court**
Mon-Thur 10:30 ~ 20:30
Fri-Sun 10:30 ~ 21:00
*Including holidays
- ➡ **Special restaurant area**
Mon-Sun 11:00 ~ 21:00
*Closed on Lunar New Year / Chuseok
*Last order 30 minutes before restaurant closing time.
*Instant reimbursement service for additional tax/ WeChat Pay & UnionPay available/ Chinese interpretation service available (82-1644-4001)
- ☎ 82-1644-4001
- 🌐 www.premiumoutlets.co.kr/paju

The ultimate destination for outlet shopping!

Exciting. Special. Something extraordinary. Enjoy savings up to 65% on the finest international and Korean designer brands. And when shopping is part of the journey, PAJU PREMIUM OUTLETS® has the exceptional experience you seek. PAJU PREMIUM OUTLETS® features outstanding shopping for every budget and every style in Korea. PAJU PREMIUM OUTLETS® features 220 stores of the most sought-after designer retail brands in the world including Armani, Coach, Polo Ralph Lauren, Tory Burch, Hugo Boss, MCM, Nike, adidas, The North Face and more, all offering great savings every day.



Goyang

ONEMOUNT | 원마운트



- ➡ **Juyeop Station Exit2**
10 min. walk using park road
- ➡ from downtown Seoul
(approx. 3~40,000 KRW)
- ☎ 10:00 ~ 18:00 Varies by season
- ☎ 82-1566-2232
- 🌐 www.onemount.co.kr

The choice of more than 500,000 foreign visitors, ONEMOUNT is the place for summer and winter leisure any time of the year.

Enjoy dogsledding with Siberian Huskies and curling games at Snow Park, or cool off at the recently remodeled outdoor water park, which started operation at night since May (indoor facilities are open throughout the year). With the EG Shuttle, it's now easier than ever to have fun at ONEMOUNT.



Goyang

Hanwha Aqua Planet Ilsan | 한화 아쿠아플라넷 일산

Hanwha Aqua Planet Ilsan is the first aquarium in Korea to reconstruct the Amazonian jungle at an aquarium. It is the largest aquarium in Seoul-Gyeonggi area, boasting *22 species of fish (25,000 total), and 50 species of other aquatic life (600 total) Offering interactive programs and content such as Alive Star, it is truly a special oasis found in the city.



- ➡ Juyeop Station, Exit 2 or 3
Towards Juyeop Park
(15 minutes walk)
- ➡ Juyeop Bus Station (Central) →
Bus no. 080 → Munchon Village
→ Hyundai Department Store →
Hanwha Aqua Planet Ilsan
- ➡ Juyeop Station, Exit 4
(about 3,200 KRW)
- ☎ 10:00 ~ 17:00
- ☎ 82-31-960-8500
- 🌐 <http://www.aquaplanet.co.kr/ilsan/index.jsp>



3 Daehwa

15min / ₩1,050

Goyang

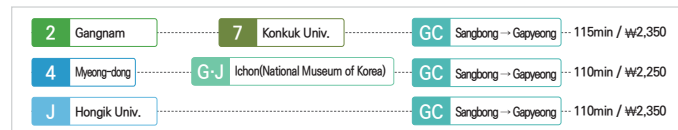
Hyundai Motorstudio Goyang | 현대 모터스튜디오 고양



- ➡ **Daehwa Station Exit No.1**
- ➡ Bus No. 058(Green Bus) – Get off at Hyundai Motorstudio Goyang (15min/ 1,050 KRW)
- ➡ Taxi approx. 3,000 KRW
- ☎ 10:00 ~ 19:00/Last Ticket sale 17:30/ Last admission 18:00
(Closed every Mondays, New Year's Day, Lunar New Year's Day and the day after, Chuseok Day and the day after)
- ☎ 82-1899-6611
- 🌐 <http://motorstudio.hyundai.com/goyang>

Hyundai Motorstudio Goyang is the largest automobile theme park in Korea, offering fun and excitement for visitors as they learn about how cars are manufactured and how they function.

There are many facilities visitors can enjoy, including the Kitchen, a large area replete with tempting delicacies, our cozy Cafe, and the Shop, which offers special collections and souvenirs.



1. Get off at Cheongpyeong Station /Gapyeong Station (Gyeongchoon Line)
2. Get on "Gapyeong Tour Circuit Bus"
3. Get off at Cheongpyeong Station (Gyeongchoon Line)
4. Move to Cheongpyeong Terminal (10 minutes on foot) and get on inter-city bus to Goseong-ri
1. Get on and off the bus to Cheongpyeong Terminal at Dongseoul Bus Terminal, Sangbong Terminal
2. Use the intra-city bus to Goseong-ri
- Turn right toward Homyeong-ri at the Cheongpyeong Dam Entrance three-way intersection past Daeseong-ri before Cheongpyeong
- 09:00 ~ 18:00
(Open 365 days/year)
- 82-31-584-8200
- www.pfcamp.com

Cheongpyeong

Petite France | 브띠프랑스



(The only France-themed park in Korea)

A small French cultural village in Korea, Petite France is known as one of the major attractions of the Korean Wave as the filming locations for various TV series including 'Beethoven Virus', 'Secret Garden', 'My Love from the Star', and 'Running Man'. Have a great day in Petite France, where you can see a flea market selling European antiques on the street, listen to melodies of a 100-year-old music box and watch a marionette play at the town square.



1. Get off at Cheongpyeong Station (Gyeongchoon Line)
- Cheongnyang-ri → Cheongpyeong → The Garden of Morning Calm (Express City Bus → City and Circuit Bus)
- Cheongpyeong Station → The Garden of Morning Calm 18,000 ~ 20,000 KRW
- 08:30 ~ Sunset (Winter until 21:00)
- 82-1544-6703
- http://morningcalm.co.kr

Cheongpyeong

The Garden of Morning Calm | 아침고요수목원



The Garden of Morning Calm expresses the beauty of Korean nature in the form of a garden. It is one of the well-known gardens in Korea, where you can meditate through the beauty of natural world and receive emotional inspiration from nature.

Cheongpyeong

Edelweiss Swiss Theme Park | 에델바이스 스위스 테마파크



A theme park based on a small village festival in Switzerland. Edelweiss consists of uniquely designed buildings, including museums, galleries, theme houses, photo zones, and trick arts, and offers relaxation in the scenery of rural Switzerland.



- Bus + Taxi
Inter-city 7000 (Jamsil Station) → Seorak Terminal → Take taxi → Edelweiss
- Train + Taxi
Cheongpyeong Station → Take taxi → Edelweiss
- Weekdays: 10:00~18:00
Weekends: 09:00~18:00
- 82-31-581-9400
- http://www.swissthemepark.com



Yangpyeong

Semiwon | 세미원



The name of Semiwon means "a place that purifies the mind with water and the beautifies the heart with flowers. During summer, it is filled with lotus flowers that were planted in the garden to help purify the Han River. It is a beautiful garden where you can enjoy different events and activities with seasonal flowers throughout the year.

- Take the airport subway, transfer to the Gyeongui-Jungang Line at Gongdeok Station, and get off at Yangsu / 4,650 KRW (2H 35M)
- Take Bus No. 6006, Bus No. 6705, or Bus No. 6006-1 and get off at Jamsil Station, then take Bus No. 200-2 and get off at Yangseo-myeon Office, Sports Park / 17,750 KRW
- Incheon Airport Departure 1H 25M 98.6km / Approx. 80,000 KRW
- June~September 07:00~22:00
October~May 09:00~21:00
- 82-31-960-8500
- www.semiwon.or.kr



Yangpyeong

Yangpyeong Rail-Bike | 양평레일바이크



A rail bike is a four-wheel bike on rails, a sports leisure facility for you to enjoy nature with fresh air and breeze, a signature of Yangpyeong.

- Cheongnyangni Station → Youngmun Station (Gyeongui-Jungang Line) 2,200 KRW
- Dongseoul → Youngmun Terminal 6,500 KRW
- Youngmun Station → Yangpyeong Rail Bike 3,000 KRW (4,000 KRW when summoned)
- 09:00~18:00
(Summer closing time 19:30)
- 82-31-775-9911
- www.pyrailbike.com



Yangpyeong

Yangpyeong The Green | 양평 더그림



A picturesque garden more beautiful than any painting could be. Nominated as the best garden for the 2017 Gyeonggi Beautiful Garden Culture Award, The Green is a botanical garden with the vibe of a cafe where you can see flowers and trees while listening to water flowing and birds chirping along with beautiful scenery. In the garden, European style buildings stand harmoniously between pine trees and a clear creek that flows throughout the year. It is also a great place to take beautiful pictures, used as the filming location of over 60 TV series and various commercial advertisements. Once you pay the admission, you can exchange your ticket for a drink, you may purchase various tools, household products as well as wine and dessert.

- 10 minutes from Yangpyeong Station (approx. 8,000 KRW)
- 10:00~19:00 (Spring, Autumn), 10:00~20:00 (Summer), 10:00~18:00 (winter) Closed every Wednesday
- 82-70-4257-2210
- www.thegreem.com

4	Myeong-dong	G-J	Ichon(National Museum of Korea)	G-J	Yongmun	115min / ₩2,250
---	-------------	-----	---------------------------------	-----	---------	-----------------

Yangpyeong

Trick Eye Museum | 트릭아이뮤지엄



- Get off at Yongmun Station (Gyeongui-Jungang Line) (Approx. 2,500 KRW)
- Yongmun Inter-city Bus Terminal (Approx. 6,500 KRW)
- Yongmun Station - Youth Museum (Approx. 12,000 KRW)
- 10:00 - 19:00 (Yangpyeong) 09:00 - 21:00(Hongik University)
- 82-31-775-8907 82-2-3144-6300
- www.retro museum.co.kr www.trickeye.co.kr



The Trick Eye Museum is a 3D illusion art museum, a new type of culture and entertainment space where the audience is the center of experience. It is the world's first art gallery that applies AR technology to the exhibited artworks, presenting the audience with an amazing experience.

1	Seoul Station	1	Bugae	45min / ₩1,550		
4	Myeong-dong	1	Seoul Station	7	Onsu → SamsanGymnasium	65min / ₩1,650
2	Hongik Univ.	7	Daerim	7	SamsanGymnasium	55min / ₩1,550

Bucheon

Woongjin Play Doci | 웅진플레이도시

WOONGJIN PLAY DOCI is a comprehensive Urban leisure theme park where visitors can enjoy a range of activities and events throughout the year. A water Park equipped with a variety of attractions, a large-scale spa zone offering traditional as well as themed spa experiences, the Snow Park, the only place in Korea where you can enjoy an indoor ski slope, and Summer Sleds Park that you can meet in the summer and winter - you can have fun and satisfy all your needs at Woongjin Play Doci.

- Line No.7 Samsan Gymnasium Station walk 7 minutes Approx. 1,550 KRW
- Line No.1 Bugae Station transfer to Town Bus 579, 15 minutes, Approx. 1,550 KRW
- No. 1200 Hongik University Samsan Gymnasium Station, about 40 minutes
- Seoul city center 30 minutes Approx. 20,000 KRW
- Water Park & Spa 10:00-21:00 Ski/snowboard slope 9:30-21:00 Sleds Park (Winter/summer) 9:30-18:00
- 82-1577-5773
- www.playdoci.com



1	Seoul Station	1	Bugae	45min / ₩1,550		
4	Myeong-dong	1	Seoul Station	7	Onsu → SamsanGymnasium	65min / ₩1,650
2	Hongik Univ.	7	Daerim	7	SamsanGymnasium	55min / ₩1,550

Bucheon

Korea Manhwa Museum | 한국만화박물관



Korea Manhwa Museum sheds a light on the past one hundred year history of Korean cartoons. With at least 260 thousand cartoon materials, the museum offers an animation theater as well as various experiences to satisfy your five senses. It is the only cartoon cultural complex in Asia where you can enjoy all of these.

- (Incheon) Line No.7 Samsan Gymnasium Station Exit 5 (3minute walk)
- No. 79(Bugae Station →Korea Manhwa Museum)
- No.37(Songnae Station →Sangdong Station → Samsan Gymnasium Station)
- No.53(Songnae Station →Sangdong Station → Korea Manhwa Museum)
- No.59-1(Hwagok Station →Korea Manhwa Museum)
- Base rate when used from Bucheon Central Bus Terminal
- 10:00 - 18:00 (Entrance Open until 17:00)
- * Closed: Mondays, Jan. 1, one day before and the day of Lunar New Year Day and Chuseok
- 82-32-310-3090-1
- www.komacn.krcomicsmuseum

2	Gangnam	7	Konkuk Univ.	1	Dobongsan → Soyosan	115min / ₩2,150
4	Myeong-dong	4	Chungmuro	1	Chang dong → Soyosan	85min / ₩2,050

Pocheon

Herb Island | 허브아일랜드



- 2,450 KRW (Subway+Bus) Based on Seoul Station Subway: Seoul Station-Soyosan Station Bus: Soyosan Station (opposite), get on Bus No. 57- Get off at Herb Island
- 65,000 KRW(Taxi) Based on Seoul Station Seoul Station → Herb Island
- 10:00 - 22:00 (Sat. - 23:00)
- 82-31-535-6494
- www.herbisland.co.kr

Since 1998, Herb Island has promoted the world of happiness brought by herbs. The overall theme is to foster herb use in daily life as in the Mediterranean. It houses Venice Village, Santa Village, 1970-80s "Memory Lane," as well as a herb plant museum and several shops that sell herbal products.

At Herb Healing Center, 10 major natural elements are used to provide visitors with a healthy herbal experience. Operated every day of the year, you can enjoy herbs year-round and rest your mind and body to your heart's content.



2 Gangnam 7 Konkuk Univ. 1 Dobongsan → Soyosan 115min / ₩2,150

Pocheon

Boss Apple Farm | 사과장매



- ③ Capital Area Airport Railway
Incheon Airport Terminal 1 Station
→ Capital Area Line 4 Seoul
Station → Capital Area Line 1
Changdong Station → Express
City Bus No. 138-6 (Hanwha Life
Entrance) → Get off at Baekroju
Amusement Park Entrance
(Approx. 3,750 KRW)
- ④ Line 1 Seoul Station → Express
City Bus No. 138-6 (Hanwha Life
Entrance) → Get off at Baekroju
Amusement Park Entrance
(Approx. 2,650 KRW)
- ⑤ 09:00 ~ 17:00
- ⑥ 82-31-544-8998
- ⑦ <http://bossapple.com/>



66,000m² of mini apple farm
Mini apple picking
Cooking sessions (apple pie, apple jam, apple vinegar, apple syrup)
Playground (block room, trampoline, cart tours)

Pocheon

Pocheon Art Valley | 포천 아트밸리

It is the first environmentally friendly art and cultural park in Pocheon, at an abandoned mine which had been closed since the 1990s. Recently, it is attracting a lot of foreign visitors as it was used as the filming location (Cheonjuho Lake) for various TV series such as "Moon Lovers: Scarlet Heart Ryeo", "Legend of the Blue Sea", "A Korean Odyssey", and so on. In addition, visitors can enjoy various attractions and entertainment such as Astronomical Science Museum, Sculpture Park, light sculptures, late night media facade, and so on.

- ③ Seoul-Pocheon City Hall, transfer to Bus No. 73
- ④ Base fare from Sinbuk-myeon Office
- ⑤ Summer: 09:00 ~ 22:00
(Last admission: 20:00)
Winter: 09:00 ~ 21:00
(Last admission: 19:00)
Mondays: 09:00 ~ 19:00
(Last admission: 18:00)
- ⑥ 82-31-538-3485
- ⑦ artvalley.pocheon.go.kr



Icheon

Starlight Garden 000Z000 | 별빛정원 우주



- ③ Get off at Icheon station of Gyeonggang line then take taxi (Approx. 12,000 KRW)
- ④ board Bus No. 22-9, 12-3, or 12-1 get off at Icheon Lotte Premium Outlet Stop, and walk 10 minutes
- ⑤ Icheon Terminal - 000Z000 (15,000 KRW)
- ⑥ 18:00 ~ 23:00
(Hours differ by season)
- ⑦ 82-31-645-0002
- ⑧ www.000z000.co.kr

Starlight Garden 000Z000 is a beautiful garden decorated by Moon Rabbit with starlight seeds brought from the space. It is an illuminated area that consists of Flower Garden, 101 meter-long Milky Way Tunnel Galaxy 101, Violet Fantasy, and Romantic Garden, which allow you to enjoy beautiful lights 365 days a year. Other unique attractions include a special cafe where you can enjoy coffee 35 meters above the ground, the first of its kind in Asia, and 000Z000 Tower. Located in Yeongdong Highway, the main road leading to Gangwon-do, it is easily accessible from Gangnam in Seoul, Bundang, and Suwon within one hour. It can be reached not only by the highway but also by the national road. In addition, you can catch up on your shopping, as it is located only 5 minutes away from a large shopping mall, Icheon Lotte Premium Outlet.

- ③ 1. From Dong Seoul Bus Terminal, take an intercity bus to Janghwon (from 6:30AM, runs regularly every 20 to 30 minutes). Takes about 1 hour. Get off the bus at Janghwon Terminal and take a taxi (approx. 10-15minutes)
- 2. From Dong Seoul Bus Terminal, take an intercity bus to Iljuk (from 6:30AM, runs regularly every 20 to 30 minutes). Takes about 1 hour and 10 minutes. Get off the bus at Iljuk Terminal and take a taxi.
- 3. From Incheon International Airport/ Gimpo Airport, take an airport limousine bus to Icheon (runs every hour from 7:00AM) and get off at Dong Seoul Bus Terminal. From there, refer to 1 or 2 above. Or get off at Icheon Terminal then take an express bus (runs every 30 minutes) to Janghwon (takes about 30-40 minutes) and take a taxi.

- ④ 09:00 ~ 18:00 Closed on Mondays
- ⑤ 82-31-641-7540
- ⑥ pigpark.co.kr

Icheon | 돼지박물관

Pig Museum



Learn as you interact with live pigs.

Inspired by pigs, Pig Museum in Icheon was founded in 2011. It is an educational farm which runs various interactive programs such as Pig Sports Day, raises pigs, produces and sells pork and other pork-based products. Through the very first "pig show" in Korea, the farm presents joy to its visitors and sells various agricultural products in cooperation with the local farming community. There are many programs to participate in including Pig Sport Day where you can see pigs up close and learn their characteristics, sausage-making lessons where you make your own pork sausage and learn about healthy food, and a pig-hugging experience to overcome prejudice about pigs as pets. The Pig Museum exhibits 1,300 paintings and craftworks. It was established as an 'edufarm' in conjunction with the curriculum of primary and middle schools. Nearly 50 thousand people visit the Pig Museum every year.



2	Gangnam	4	Sadang	4	Seoul Grand Park	30min / ₩1,350
4	Myeong-dong	4	Seoul Grand Park	30min / ₩1,550		

Gwacheon

Seoulland | 서울랜드



- Seoul Grand Park Subway Station of Line No. 4 Exit1, 2, or 3
- 09:30 ~ 21:00
(Refer to official homepage for closing hours)
- 82-2-509-6000
- www.seoulland.co.kr

Seoulland is the first theme park in Korea with amusement attractions. It is easy to access by public transportation, located at Grand Park Station on Line No.4. It consists of uniquely themed leisure and entertainment spaces including the World Plaza, Adventure Land, Fantasy Land (Character town), Tomorrow Land, and Samcheolli Hill. In addition, Seoulland welcomes a large number of visitors every year while hosting various flower festivals of brilliant colors with tulips, cherry blossoms, and chrysanthemum flowers as well as offering various rides, performances, and exhibition events. It gives joy to visitors with special late night events such as fireworks and light shows.



2	Gangnam	3	Seoul Nat'l Univ. of Education	3	Jongno 3(sam)ga	30min / ₩1,350
4	Myeong-dong	3	Chungmuro	3	Jongno 3(sam)ga	10min / ₩1,250

Seoul

Painters Hero | 페인터즈 히어로



Painter HERO is the World's first and only art performance, ranking No.1 in number of attendances for 3 consecutive years with over one million cumulative spectators. Recreating a live drawing show by combining it with 3D videos of the most influential heroes of their time, exciting dance moves, and witty comedy, the team presents a different level of fun and inspiration to the audience.



- Jongno Theater-Line No. 1, 3, 5, Jongro 3-ga Station Exit 14
Seodaemun Theater-Get off at Line No. 2, 5 Chungjeongno Station
- Jongno Theater-Bus 111 / Green Bus 7212
Blue Bus 101, 103, 140, 201
Express City Bus 9301
Get off at 'Jongno 3-ga Station Exit 15'
Seodaemun Theater-Bus 1002
Blue Bus 160, 171, 260, 270, 271, 273, 600, 602, 721, 751, N26
Express City Bus 1004
Express Bus 8600, 8601, 8601A
Airport Limousine 6002
Get off at 'Chungjeongno Station'
- Jongno Theater
Search 'Seoul Theater'
Seodaemun Theater
Search 'Salvation Army Art Hall'
- Shows are performed twice a day (17:00/20:00), every day of the year/ 75 mins per performance.
- (Seoul) 82-2-766-7848 (Jeju) 82-64-745-7848
- http://thepainters.co.kr/

4 Myeong-dong → Chungmuro

3 Chungmuro → Dongguk Univ. 10min / ₩1,250

Seoul

Shilla Duty Free Store (Seoul Incheon Branch) | 신라면세점(서울점, 인천점)



Welcome to Shilla Duty Free Store Seoul Branch, where the best duty free shopping service expanding to the world scene begins. A festival of famous luxury brands including Louis Vuitton, Chanel, Gucci, and global beauty brands hand-picked by the world's renowned beauty experts. Enjoy top-of-the-line duty free shopping encompassing trendy fashion, accessory products, and food, all in the Shilla Duty Free Store Seoul Branch.



- Subway Line No.3 Dongguk University Station Exit 5
- Blue Bus 144, 301, 407
- Taxi Fare Support (Present the receipt from your taxi ride and get a gift card up to KRW 20,000)
- 09:00-20:30
- 82-2-2639-6000
- www.shilladfs.com/comm/kr/en

Seoul

Airport Railroad | 공항철도



Begin your trip in Korea in a fast and convenient way with an express railway service that connects Incheon International Airport and Seoul Station directly with no stops in between. You can enjoy the beautiful scenery of Korea while looking over the Yellow Sea and Han River through the express train window.



- 82-1599-7788
- www.arex.or.kr

- Seoul Station : 378, Cheongpa-ro, Yongsan-gu, Seoul (Dongja-dong) Basement Level 2, Airport Railroad Seoul Station (First Train 06:10 Last Train 22:50)
- Airport Railroad 1 Terminal Station : 271, Gonghang-ro, Jung-gu, Incheon (Unseo-dong) Transportation Center Basement level 1 Incheon Airport 1 Terminal Station (First Train 05:23 Last Train 22:48)
- Airport Railroad 2 Terminal Station : 272, Gonghang-ro, Jung-gu, Incheon Transportation Center Basement level 1 Incheon Airport 2 Terminal Station (First Train 05:15 Last Train 22:40)

- Transfer
- Express Train
- All stop Train





Filming locations for famous Korean Soap Opera



*Petite~Petite~
Cute and Exciting European
Art Performance & Events*



A Small French Culture Village in Korea

Petite France

Reservation and Inquiry

+82-31-584-8200

www.pfcamp.com

*French Culture Gallery
where you feel even the
breath of Europe*



*Feasts in all seasons
Petite Festival*





Seoul Metro
www.seoulmetro.co.kr

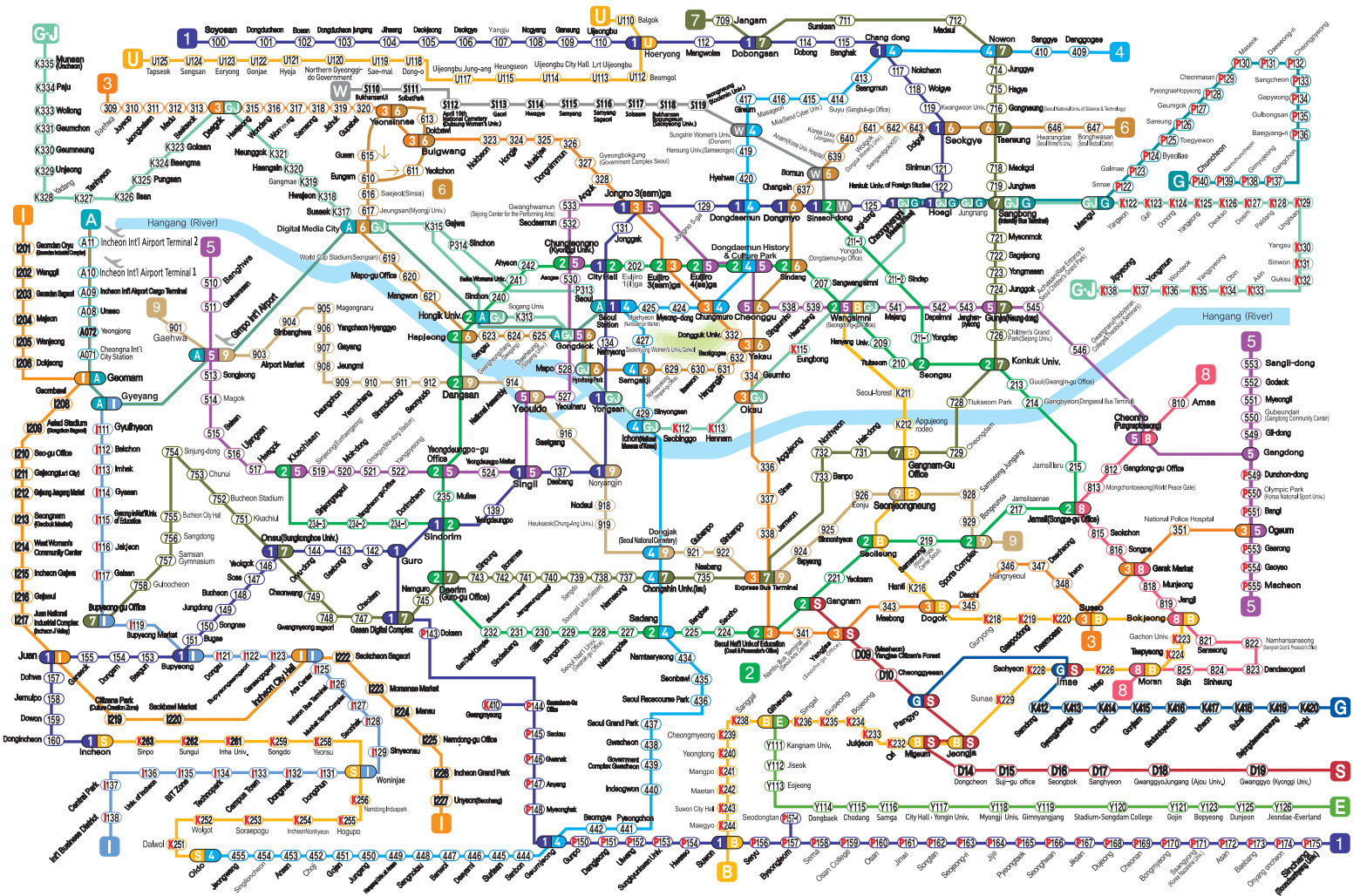
Metro Lines in Seoul Metropolitan Area

首尔及首都圈地铁线路图

ソウル首都圏路線図



※ As of April 28, 2018





EG Shuttle Bus

A Gyeonggi Southern Region

Closed on Mondays 08:30-20:00 Minimum Occupants for Departure: 1



1st Bus 08:30~18:30



2nd Bus 10:30~20:00

Fare	USD10(Adults / Children) ※Does not include entry fees for each tour destination.					
Time Table	Insa-dong	Hongik Univ. Station.	Gwangmyeong cave	Hwaseong Fortress, Suwon Palace at Hwaseong Fortress, Suwon	Korea Folk Village	Ever Land
1st Shuttle (seoul ⇒ Gyeonggi)	Boarding 08:30	Boarding 09:00	10:00	10:50	11:30	12:00
1st Shuttle (Gyeonggi ⇒ seoul)	Disembark 18:30	Disembark 18:00	17:00	16:10	15:30	Return 15:00
2nd Shuttle (seoul ⇒ Gyeonggi)	Boarding 10:30	Boarding 11:00	12:00	12:50	13:30	14:00
2nd Shuttle (Gyeonggi ⇒ seoul)	Disembark 20:00	Disembark 19:30	19:00	18:10	17:30	Return 17:00

B Gyeonggi Northern Region

Closed on Saturdays and Sundays 09:00-19:00 Minimum Occupants for Departure: 1



1st Bus 09:00~17:00



2nd Bus 11:00~19:00

Fare	USD10(Adults / Children) ※Does not include entry fees for each tour destination.					
Time Table	Insa-dong	Hongik Univ. Station	One-Mount & Aqua Planet	Hey-ri	Sanmeoru Farm	Herb Island
1st Shuttle (seoul ⇒ Gyeonggi)	Boarding 09:00	Boarding 09:30	10:00	10:30	11:00	12:00
1st Shuttle (Gyeonggi ⇒ seoul)	Disembark 17:00	Disembark 16:30	16:00	15:30	14:50	Return 14:00
2nd Shuttle (seoul ⇒ Gyeonggi)	Boarding 11:00	Boarding 11:30	12:00	12:30	13:10	14:00
2nd Shuttle (Gyeonggi ⇒ seoul)	Disembark 19:00	Disembark 18:30	18:00	17:30	16:50	Return 16:00

C Gyeonggi Eastern Region

Closed on Saturdays and Sundays 07:30-19:30 Minimum Occupants for Departure: 1

Fare	USD50(Adults / Children)
Inclusions	Entry fees for each tour destination
	Tour Vehicle
	Tour Conductor
	Meal (1xLunch)



EG Shuttle Bus

EG-Shuttle Pass Package

The easiest way to enjoy a tour of Gyeonggi-do at once!
Use the 'Pass Package' conveniently at prices that have been **discounted by 20%** or more!

1DAYS	A	\$10(KRW10,000)p/p
	B	\$10(KRW10,000)p/p
	C	\$50(KRW50,000)p/p

2DAYS	A+B	\$20 ⇒ \$15(KRW15,000)p/p
	A+C	\$60 ⇒ \$50(KRW50,000)p/p
	B+C	\$60 ⇒ \$50(KRW50,000)p/p

3DAYS	A+B+C	\$70 ⇒ \$60(KRW60,000)p/p
-------	-------	---------------------------

How to Book?

STEP 01

Choose the desired **shuttle package** or **Pass Package**



STEP 02

Reserve a **date & make a payment** through the website (www.EG-shuttle.com) or by phone (+82-2-365-1500)



STEP 03

Board the bus on the reserved date **5 minutes before** the bus boarding time



Present the tour guide in the shuttle bus with a confirmation of your reservation Exchange for your ticket
Enjoy the exciting 'Gyeonggi-do EG-Shuttle'

- Please make reservations at least 3 days prior to boarding.
- Entry fees for the tour attractions are not included.
- When using the shuttle, please abide by the schedule and wait for boarding in advance.
- Koreans can only board the bus if they are accompanied by foreigners.

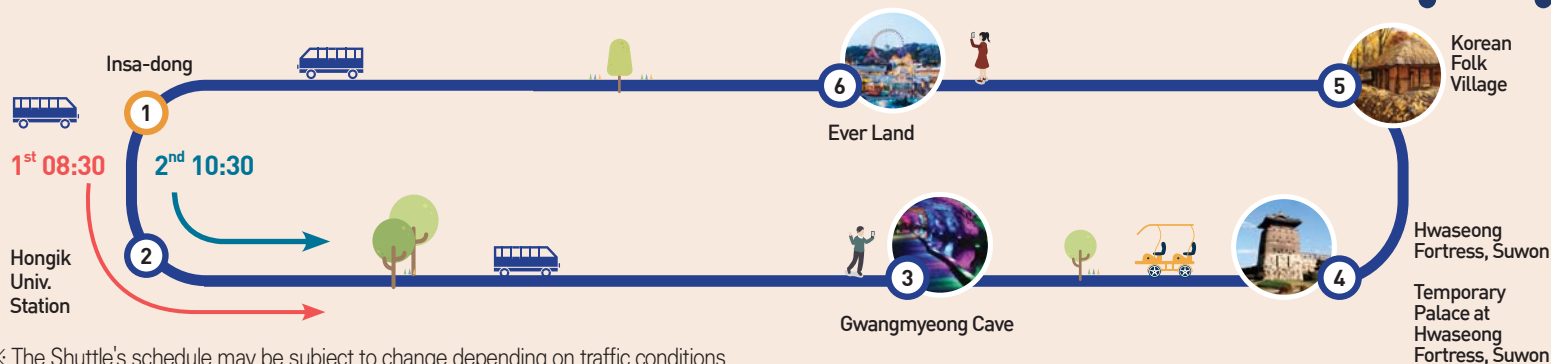




EG Shuttle Bus

A Gyeonggi Southern Region

| Traditional Culture Experience Course



B Gyeonggi Northern Region

| Romantic Nature theme Course



C Gyeonggi Eastern Region

| Korean Wave & Healing Experience Course

All Inclusive

All Inclusive Tour Experience Bus

Schedule	Insa-dong	Hongik Univ. Station	The Garden of MorningCalm	Petite France	Dumulmeori Semiwon (Tea time)	Dumehyanggi or Noljafarm choose 1 (Seasonal different)	Hongik Univ. Station	Insa-dong
{seoul ⇒ Gyeonggi}	Boarding 07:30	Boarding 08:00	09:30-11:00	11:30 - 13:30	14:30-15:30	16:10-17:40	Disembark 19:00	Disembark 19:30

※ The Shuttle's schedule may be subject to change depending on traffic conditions

COUPON BOOK

English

[Web] Gyeonggi-do Tourism Portal : www.ggtour.or.kr

[Social Media]

Sina Weibo : weibo.com/Gyeonggitour

Facebook : [ENG] www.fb.com/ggtour.en

[Gyeonggi-do coupon book download]

<http://coupon.ggtour.or.kr> ▶ Coupon book Download

Korea Travel Hotline : 1330

Tourist information available 24 hours a day, 365 days a year

Gyeonggi-do Call Center : 031-120

Mon - Fri 09:00-18:00

Service available in English, Japanese, Mongolian and Vietnamese

Free Translation Service BBB(Before Babel Brigade) : 1588-5644

365 days a year, Service available in 19 Languages.



Explore Gyeonggi! Enjoy Gyeonggi! Exciting Gyeonggi!

Tel 02-365-1500

Web Site www.EG-shuttle.com

E-mail hanashuttle@hanatour.com

Business Hours 09:00-18:00 during the weekdays